

# **BARC Executive Director Report**

**BARC Governing Board  
September 16, 2016**



Bay Area  
**Regional  
Collaborative**

# Update

---

1. Integrated Climate Technical Assistance Program
  - A. Solar Ordinance Pilot Program
2. Caltrans Regional Planning Grant
3. Regional Sea Level Rise Progress Map



Bay Area  
**Regional  
Collaborative**

# 1. Integrated Climate Technical Assistance

Develop proactive program across agencies to:

- Meet climate goals
- Optimize agency coordination
- Bring best practices to scale



Bay Area  
**Regional  
Collaborative**

# 1. Integrated Climate Technical Assistance

## Pilot Project Selection Considerations:

- 1) Specific Goals, Measurable Outcomes
- 2) Primed Partnerships
- 3) Replicability & Scalability
- 4) Joint Workplan, Timeline, Budget



# 1. Integrated Climate Technical Assistance

## Solar Ordinance Pilot Project:

Meeting State and Local  
Climate Goals



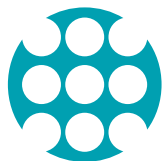
Bay Area Precedent



Primed Partnership and Tools



Detailed Workplan



Bay Area  
**Regional  
Collaborative**

# 2. CalTrans Regional Planning Grant

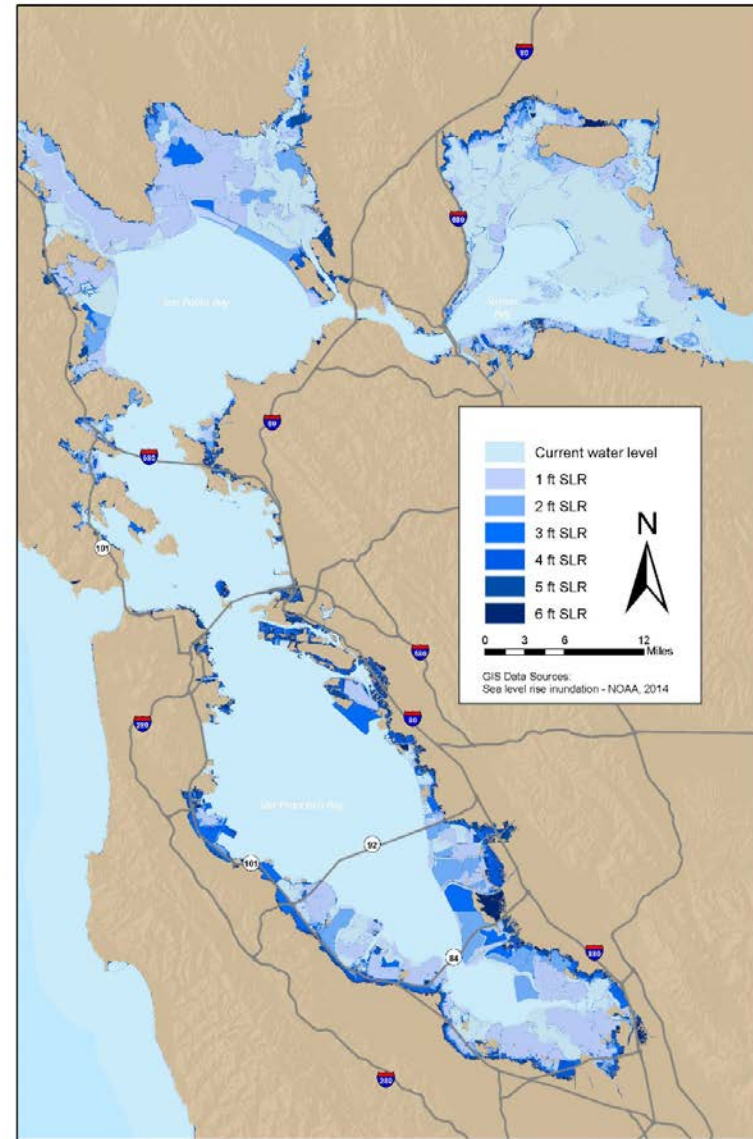
## *A Resilient Transportation System for Safe and Sustainable Communities* (Oct 2016 – June 2019)

Regional Vulnerability Assessment & Strategy Development for:

- Transportation System
- Priority Development Areas (PDAs)
- Priority Conservation Areas (PCAs)
- Disadvantaged Communities



### Regional Inundation Extents 0 - 6 Feet Sea Level Rise



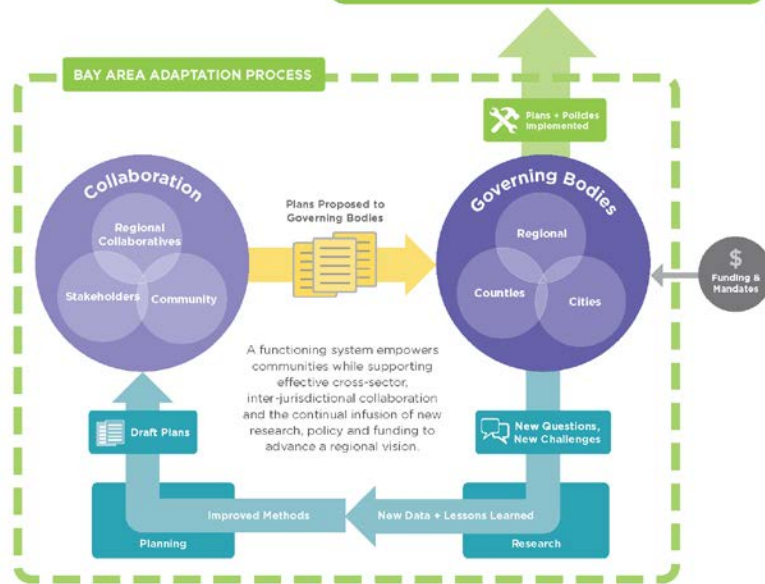
# 3. Regional Sea Level Rise Progress Map

## Regional Sea Level Rise Progress Map

Path to a More Resilient Bay Area



The Bay Area is facing an unprecedented challenge due to the impacts of flooding from sea level rise and storm surge. As sea levels rise and flooding becomes a more frequent occurrence, the Bay Area needs a regionally comprehensive approach to help protect its communities and infrastructure.



### Research

continual learning through science advances; regional understanding of vulnerabilities and impacts; guides toward appropriate strategies

**Adapting to Rising Tides (ART) Program**  
BCDC

**Dynamic Bay Model**  
Climate Readiness Institute

**Ecological Effects of Sea Level Rise Project**  
USGS, Blue Point

**Groundwater Research**  
Climate Readiness Institute

**Head of Tide Program**  
BCDC

**Inundation Mapping**  
BCDC, MTC, AECOM

**Operational Landscape Units**  
SFEI, SPUR

**Our Coast, Our Future/ COSMOS**  
USGS, Blue Point

**Resilience of Infrastructure as Seas Rise**  
UC Berkeley, UC Davis

**Scenario Development**  
Climate Readiness Institute

**Stronger Housing/ Safer Communities**  
BCDC, ABAG

**Surviving the Storm**  
Bay Area Council

### Methods

the process and tools to assess vulnerability and to identify, evaluate, plan, and act on adaptation

**Adapting to Rising Tides**  
Public Agencies

**Resiliency by Design**  
Public Agencies  
Private Entities  
Nonprofits/Researchers

**FEMA Risk Maps**  
Public Agencies

**Long Term Sediment Management Strategy**  
Public Agencies

**Unleashing Resilience**  
Public Agencies

### Plans

regularly updated and institutionalized documents integrate research and policy and set priorities toward meeting regional outcomes

**Bay Area Integrated Regional Water Management Plan**

**Baylands Ecosystem Habitat Goals Update**

**Conservation Management Plan**

**Clean Air Plan**

**Hazard Mitigation Planning**

**Plan Bay Area**

**Regional Water Board Basin Plan**

**San Francisco Bay Plan**

### Collaboration

#### Regional Collaboratives

**Bay Area Ecosystems Climate Change Consortium (BAECCC)**

**Bay Area Regional Health Inequities Initiative (BARHI)**

**Coastal Hazards Adaptation Resiliency Group (CHARG)**

**Climate Readiness Institute (CRI)**

**Great Communities Collaborative (GCC)**

**Resilient Communities Initiative (RCI)**

#### Community

Residents, community groups, and neighborhood advocates planning for a more resilient future

#### Stakeholders

Academic  
Business  
Environmental  
Government



**Regional Collaborative**



**THANK YOU!**



Bay Area  
**Regional  
Collaborative**